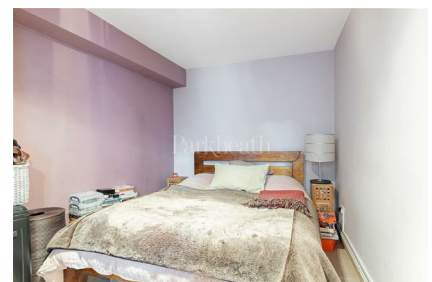
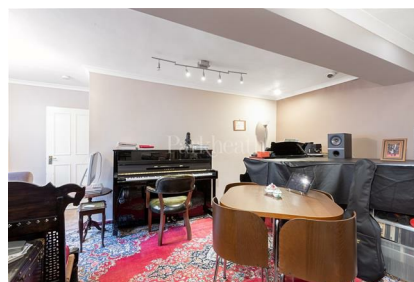


# Parkheath

*Sold on Service*

---

**Belsize Avenue NW3**  
**Asking Price £500,000**



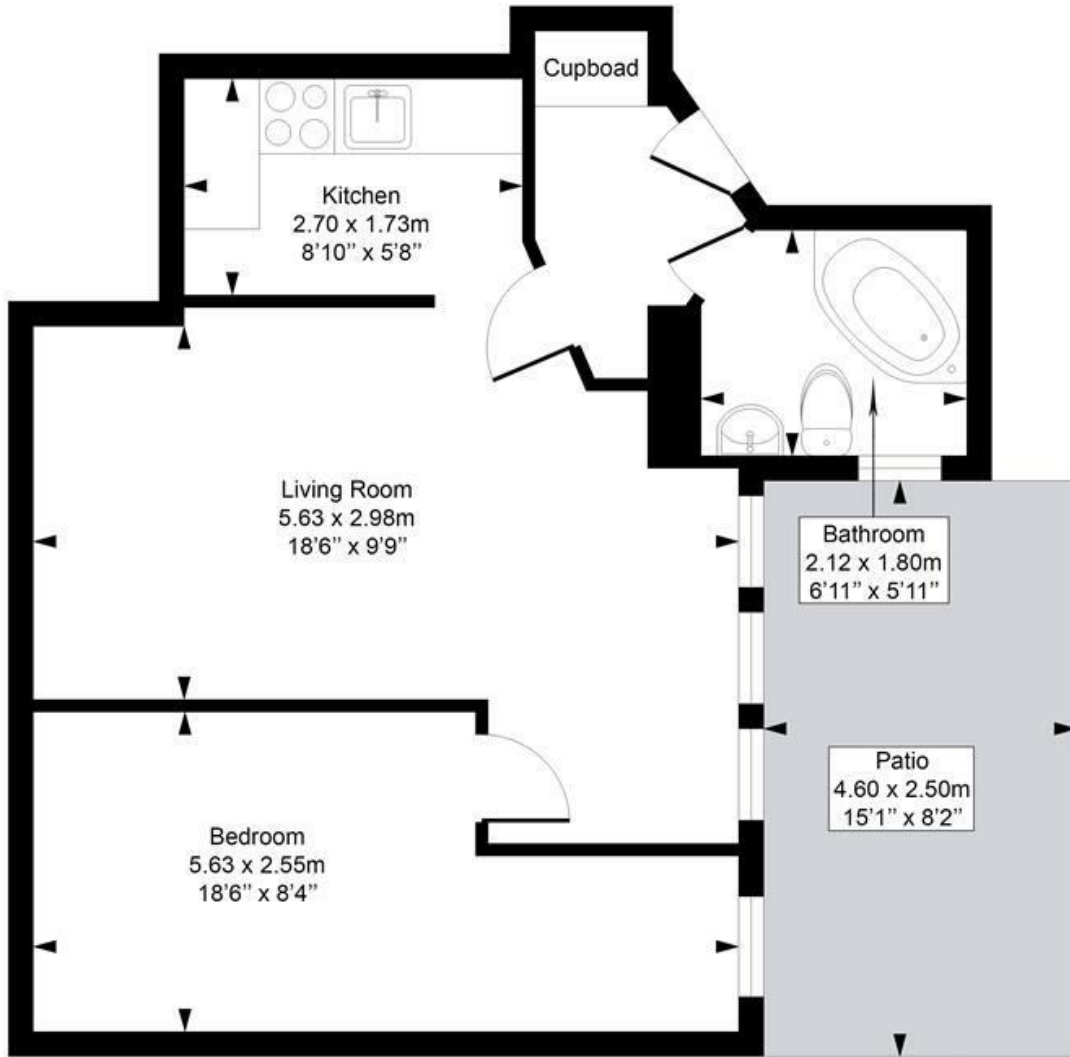
Well presented 1 bedroom apartment  
Sole use of 15' secluded front patio  
Semi-detached red brick victorian conversion  
Own entrance  
Share of freehold

Approaching 500 sq ft on lower floor  
Tiled floor throughout  
18' reception  
18' bedroom  
Located moments from all Belsize Park amenities

Belsize Park Office 020 7431 3104

## Belsize Avenue

Approximate Gross Internal Area = 45 sq.m / 487 sq.ft



### Ground Floor

This plan is for layout guidance only. Drawn in accordance with RICS guidelines. Not drawn to scale unless stated. Windows & door openings are approximate. Whilst every care is taken in the preparation of this plan, please check all dimensions, shapes & compass bearings before marking any decisions reliant upon them.

ELLIE CLAIRE PHOTOGRAPHY LTD  
[www.ellieclairephotography.com](http://www.ellieclairephotography.com)

The particulars do not constitute part of an offer or contract. The particulars, including text, photographs and plans, are for the guidance only of prospective purchasers/tenants and must not be relied upon as statements of fact. The descriptions provided therein represent the opinion of the author and whilst given in good faith should not be construed as statements of fact. Nothing in these particulars shall be deemed a statement that the property is in good condition or otherwise or that any services or facilities are in good working order. All measurements are approximate